

Utakarra Cemetery Chapel

Address **Geraldton Mount Magnet Rd, Utakarra WA**

Practice **Monsignor John Hawes**

Designed **1935-1936** Completed **1936**

History & Description The Cemetery Chapel of the Holy Spirit (*San Spirito*) at Utakarra was designed by the priest-architect Monsignor John Cyril Hawes both as a cemetery chapel *and* as a tomb for the remains of Belgian born Archdeacon Adolphe Lecaille. Lecaille, in addition to his duties as a pioneering priest in the Geraldton area, built at least seven churches in Western Australia in the second half of the nineteenth century. Lecaille died in Perth in 1908, and was initially buried there.

The working drawings by Hawes for the chapel are dated September 1935, and further detailed drawings were made in May 1936. It was completed in June of 1936.

The Utakarra chapel demonstrated a struggle Hawes faced as an architect, attempting to implement his own artistic development and influences in the face of rigid traditionalist ideas for church design. Through his wide reading, Hawes was in touch with the 1930s Modern movement in architecture, where architects were trying to find a new architectural expression that reflected the twentieth-century machine age. This comparatively new style was much less readily accepted by those who had not had the exposure to the influences that Hawes had experienced, and contrasted with the northern European Gothic structures favoured by Australian clergy of the time.

Statement of Significance The *Cemetery Chapel of the Holy Spirit* has a close association with prominent ecclesiastical architect Monsignor John Hawes as the architect, and with Archdeacon Lecaille as his final resting place;

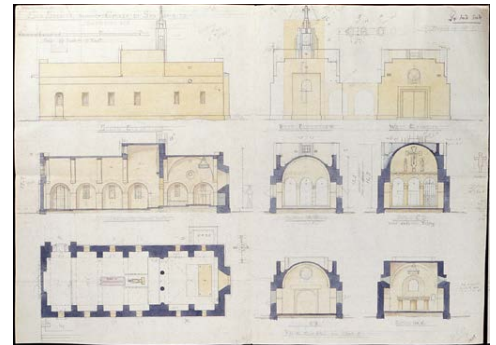
The Chapel demonstrates its aesthetic and historic value to the community through its propensity to contribute to appreciation of and to teach of John Cyril Hawes' life, and his international architectural and liturgical works; and

The Chapel is a relatively rare early example of Modern movement design in ecclesiastical architecture, shown in its shape and detailing.

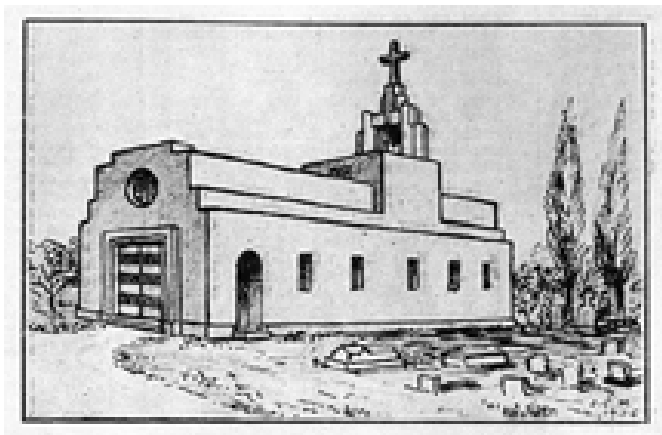
Criteria Applicable N1, N2, N3, N5



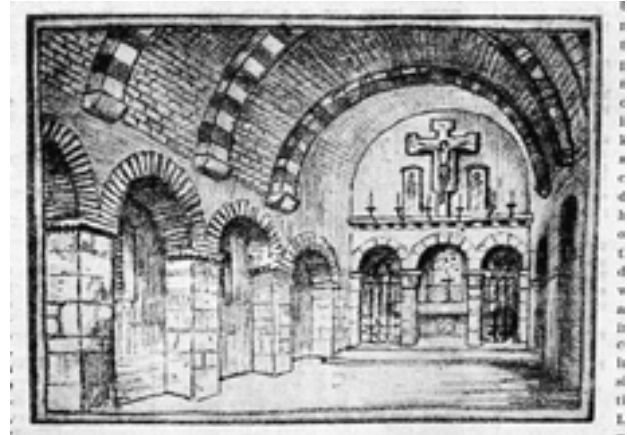
Utakarra Cemetery Chapel from the south-east (John Taylor, 1998)



Sections and elevations dated 1935 (Between Devotion and Design p.153)



Hawes' sketch view - from the south-west, 1935 (Between Devotion and Design p.152)



Hawes' sketch view - of the interior, 1935 (Between Devotion and Design p.152)