



GO TEAM

A PRODUCT'S DESIGN MAY BEGIN IN THE IMAGINATION OF A SINGLE DESIGNER BUT OFTEN NEEDS A TEAM OF COLLABORATORS TO BRING IT TO MARKET. IN GOOD COMPANY, AN EXHIBITION AND SERIES OF EVENTS CURATED BY SYDNEY DESIGN COLLECTIVE & COMPANY, PUTS THE FOCUS ON THE PEOPLE WHO HELP MAKE DESIGN PUBLIC, FROM CREATORS TO MANUFACTURERS AND RETAILERS SUCH AS TOP3 BY DESIGN MANAGING DIRECTOR TERRI WINTER, ABOVE. AT OBJECT GALLERY UNTIL 3 APRIL; WWW.OBJECT.COM.AU.



INSPIRE: AUSTRALIAN NATIONAL ARCHITECTURE AWARDS 2010 (REVEALBOOKS, AUSTRALIAN INSTITUTE OF ARCHITECTS, \$99.10), IS THE FIRST IN A SERIES OF 10 LIMITED-EDITION BOOKS SHOWCASING WINNING PROJECTS FROM THE AWARDS. WWW.ARCHITECTURE.COM.AU.



open sesame

APPEARANCES CAN BE DECEIVING. BORIS DENNLER'S WOODEN HEAP PROJECT APPEARS TO BE AN INNOCUOUS STACK OF FIREWOOD BUT IS ACTUALLY CLEVERLY DISGUISED FURNITURE. PROTOTYPES INCLUDE THIS CABINET, PICTURED, AND A SET OF DRAWERS. WWW.BORISLAB.COM.



DANIEL TO AND EMMA AISTON OF STUDIO DANIELEMA, ABOVE, HAVE WON THE BOMBAY SAPPHIRE DESIGN DISCOVERY AWARD 2010 WITH 'BASICS', A COLLECTION INCLUDING A LIGHT, MAGNETIC TOWER, LEFT, AND BRASS PAPERWEIGHTS, BELOW. WWW.DANIEL-EMMA.COM.



SHADY NUMBER
Perpendicular numbers are made legible by shadows cast on the face of this wall clock by Swedish brand Front for Porro's 2011 collection. Available from Space Furniture; www.spacefurniture.com.au.



THE RECENT DESIGN MIAMI 'IN POWER 10' SAW DESIGNER ARIK LEVY PRESENT 10 REINTERPRETATIONS OF THE 'QUAKE' TABLE, ONE OF HIS FIRST DESIGNS FOR ITALIAN LABEL MOLteni&CO. EACH PIECE EXPRESSES THE IDEA OF TRANSFORMATION TO THE POWER OF 10, SUCH AS THE USE OF 10 DIFFERENT COLOURS, ABOVE. WWW.ARIKLEVY.FR.

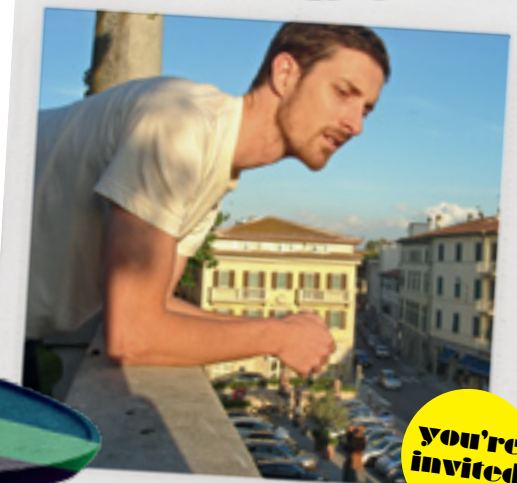
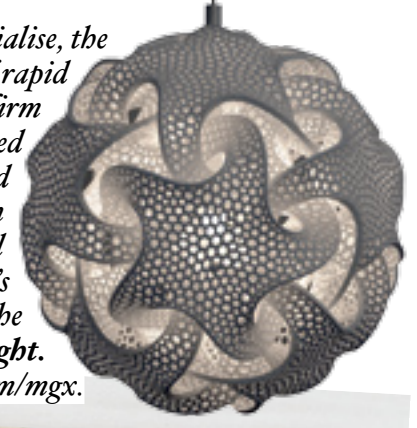


avant-garde ARCHITECTURE

THE MITCHELL WALLACE HOUSE, ABOVE, IS JUST ONE PROJECT REVEALED IN *DESIRE AND IDENTITY: THE ARCHITECTURE OF CHANCELLOR AND PATRICK* AT MORNINGTON PENINSULA ART GALLERY UNTIL 3 APRIL. IT'S CURATED BY DR WINSOME CALLISTER, WHO WORKED WITH DAVID CHANCELLOR, INSET. HTTP://MPRG.MORNPEN.VIC.GOV.AU.



.MGX by Materialise, the design division of rapid prototyping firm Materialise, have opened their first shop and exhibition space in Brussels. The store will focus on .MGX's lighting, including the 'Quin' pendant light, right. www.materialise.com/mgx.



you're invited

TO A SERIES OF DESIGN TALKS AT SPACE FURNITURE FEATURING DESIGNER TRENT JANSEN (PICTURED), WINNER OF THE 2010 SPACE + EDRA DESIGN RESIDENCY. JANSEN WILL SPEAK ABOUT HIS UNIQUE EXPERIENCE AT EDRA - ONE OF THE WORLD'S LEADING ITALIAN MANUFACTURERS. THE DESIGNER SPENT TWO MONTHS UNDER THE GUIDANCE OF EDRA ART DIRECTOR MASSIMO MOROZZI AT THE COMPANY'S HEADQUARTERS IN PERIGNANO, NEAR PISA, SEEING FIRSTHAND THE PROCESS OF DESIGN AND MANUFACTURE. THE TALKS WILL BE HELD AT SPACE FURNITURE SHOWROOMS AROUND THE COUNTRY: MELBOURNE, 1 MARCH; SYDNEY, 8 MARCH; BRISBANE, 17 MARCH. FOR MORE INFORMATION, VISIT WWW.SPACEFURNITURE.COM.AU.



OUTSIDE
IT
OUTLASTS

- OUTDOOR FURNITURE
 - INDOOR FURNITURE
 - WINDOW TREATMENTS
 - AWNINGS • UMBRELLAS
- www.sunbrella.com

sunbrella
CELEBRATING
50 YEARS