

## Council House

Address 27-29 St George's Terrace, Perth  
Practice Howlett and Bailey  
Designed 1960 Completed 1963

History & Description The design of Council House introduced to Perth both a new level of purity in modernist architectural design and a consistency of minimalist detailing, in line with national architectural developments. The uninterrupted floor-to-ceiling glazing introduced a degree of transparency previously unseen in commercial office buildings in Western Australia. The building is was designed to be completed for the VII British Empire and Commonwealth Games, epitomising the forward-looking aspirations of the Perth community at the beginning of the 1960s.

Even though Perth has developed rapidly since *Council House, Perth* it remains an architectural landmark in the streetscape of St George's Terrace, the City's main business street.

The building exhibits aesthetic characteristics of polished, hard textured, industrial building materials for the external finishes, the reduction of structural mass and the refinement of details resulted in a transparent 'glass box', unlike any other office building in Perth of the same era, and matches a small number of office buildings elsewhere in Australia of the period.

The building is a prime demonstration of the principal modernist architectural ideals admired in Australia in the early sixties and notwithstanding a major refurbishment under the direction of Peter Hunt Architects in the 1990s remains in the main true to its original intent.

Statement of  
Significance

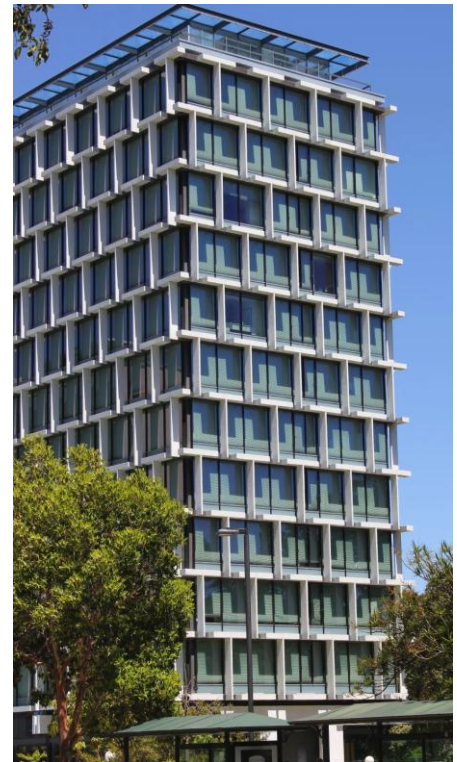
Council House demonstrates a high quality of Modernist architectural design and detailing, commensurate with its image as Perth's Civic Administrative Centre, and is a rare relatively intact example of an early 1960s modernist office building in Perth.

It reinforces the continuous development of the site as part of the central precinct for State and Local Government in Perth, and reflects the growth of the City and corresponding Council administration and is a city landmark.

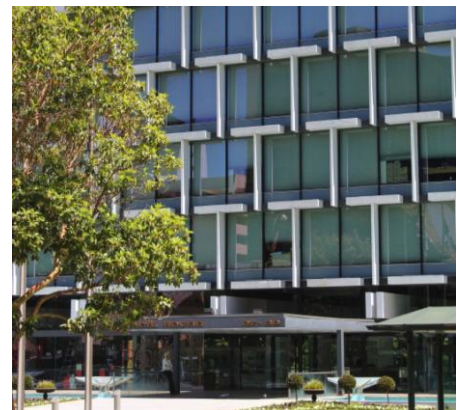
It is a tangible reminder of the VII British Empire and Commonwealth Games.

Criteria  
Applicable

Insert Criteria N1, N2, N3 and N4



Philip Griffiths Architects 2010



Philip Griffiths Architects 2010



Philip Griffiths Architects 2010

